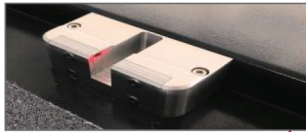
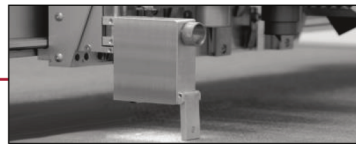


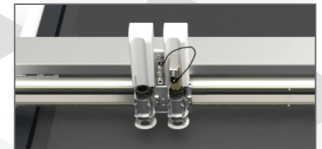
# Affordable High Speed Digital Cutting System



**Optical Auto Tool Calibration**  
Automatic knife initialization controls the cutting depth accuracy with an infrared sensor.



**Precise Automatic Positioning System**  
With the high precision CCD camera the APEXPRO accounts for multiple types of printer distortion that matches registration for high accuracy cuts.

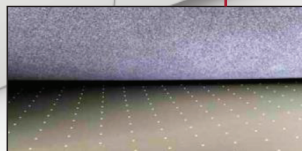


**Efficient Cutting Heads**  
The max cutting speed is 1.5m/s (4 to 6 times faster than manual cutting) which will considerably increase the production efficiency.

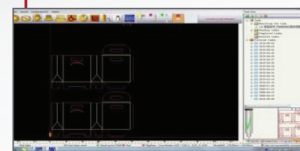
**Upgraded Circuit Layout**  
Newly upgraded circuit layout, optimized access and operation.



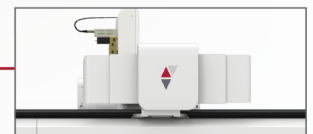
**Continuous Cutting System**  
Automated conveyor system makes feeding, cutting and collection work together. Continuous cutting function can cut long pieces saving labor cost and increasing productivity.



**Precision Aluminum Table**  
With multiple vacuum zone system for accurate material hold down.



**Integrated Controls**  
Cutterserver is an intuitive and user friendly control system



**Safety Device**  
Mechanical and optical safety devices ensure the security of the operator.

**Precision Control System**  
X & Y Drive by Belt  
15 Vacuum Zones



AFFORDABLE SOLUTIONS



IMPROVED PERFORMANCE



INCREASED PRODUCTIVITY



RELIABILITY YOU CAN DEPEND ON

**APEXPRO Tables Ship Fully Assembled**

## SPECIFICATIONS

Model	APEXPRO-1312	APEXPRO-1516	APEXPRO-2516
Effective cutting area(mm)	1300×1200	1500×1600	2500×1600
Machine dimension(mm)	2100×2000	2400×2400	3200×2400
Weight	1322.77 lbs-1984.16 lbs		
Maximum cutting speed	1800mm/s		
Maximum cutting thickness	50mm/1.97in		
Cutting precision	0.1mm/.004in		
File format	DXF /HPGL/ISO		
Suction media	Vacuum		
Pump power	7.5KW/9KW		
Electric power	220V/60HZ 380V/60HZ		
Operation environment	Temperature: 32°F-104°F Humidity: 20%-80%RH		



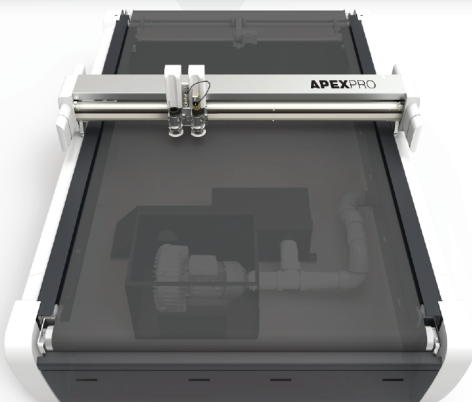
Top view



Side view



Front view



## Ultra-high Strength Integrated Frame

12mm steel frame with exceptional stability

### OUTSIDE

Ergonomic Design

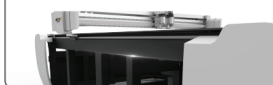
High-strength engineering materials

New Appearance

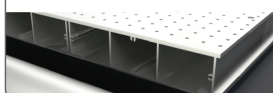
Hidden cable carrier

### INSIDE

Diagonal brace built in the gantry  
Structural strength increased by 30%



Globally sourced aluminum table construction  
Aviation grade for superior rigidity



New vacuum design  
Air flow increased by 25%

Integrated vacuum zones  
Variable vacuum control according to material size

High airflow design  
Enhanced hold power



## Affordable High Speed Digital Flatbed Cutting Systems

APEXPRO cutters are an enhanced version of the award winning APEXSERIES platform



**Standard Sound Deadening Box**  
Create a comfortable working environment  
Enhanced noise reduction for quieter operation.

**65** dB in energy saving mode

**Integrated air circulation for cooling**  
Optimal heat dissipation

APEXPRO's newly developed air circulation cooling system efficiently dissipates heat and easily withstands demanding environments

## Performance and Reliability

- ▶ Multiple Table Size Solutions to match application
- ▶ Dual interchangeable cutting head positions available for many tool combinations
- ▶ Tool Head Modules controlled independently
- ▶ Optical Auto Tool height calibration
- ▶ German engineered 450w router
- ▶ Various material unwinding devices



- ▶ Variable Vacuum Zone table controlled by the interface to adjust the vacuum power & positions for different material needs
- ▶ Aerospace aluminum table for precision and accuracy
- ▶ Offering conveyor table solutions
- ▶ Service and Support by our expert in house engineers and specialists
- ▶ Parts & Supplies in stock at CUTWORX USA, Irving Texas

## Productivity You Can Depend on

INCREASE - Capacity and productivity to take on more jobs

IMPROVE - Speed and accuracy of production

CONFIDENCE - In precision and reliability of output day after day

DECREASE - Waste, downtime and labor costs

REMOVE - Production obstacles and process in finishing



### Complete Cutting Tools

APEXPRO cutting systems have a complete set of cutting tools for Acrylic, Corrugated board, Fabric/Textiles, Foam, KT Board, Paper PVC, Vinyl and more. The cutting tools support through-cutting, half-cutting, V-cutting, engraving, creasing, marking, etc.

## Solutions for Graphics, Packing, Textile, Upholstery Markets

### Graphics Markets

- ▶ Commercial print facilities
- ▶ DOT, City/Municipality Sign Shops
- ▶ Packaging/Prototype – opportunity to produce custom tests, and small runs
- ▶ Production Graphic Houses producing POP/POS display work, trade show graphics, etc.
- ▶ Sign PSP's Franchises
- ▶ Soft Signage & Textile production companies
- ▶ Solvent/UV printer owners

### Specialty Markets

- ▶ Furniture/Upholstery industry
- ▶ Gasket manufacturing – produce smaller quantity runs and one offs that wont require steel die production
- ▶ Specialty textile – Fire retardant suit mfg example – cutting Kevlar materials that cannot be laser cut
- ▶ Technical textile & Acoustic Panel production for office/building environment applications